

Programming Instructions

The factory default access code is **123456**. For security reasons we recommend you program a **Master Code** straight after installation. This will delete the 123456 access code and allows you to program any of the following six functions. (The lock is in factory default mode when new, when reset or when all users are deleted).

All programming must be done when the unit is unlocked, and the door is open to prevent being locked out.

In the programming menu there are six options, as listed below:

1. Add a user. (Code, Remote, FOB)
2. Delete a user. (Code, Remote, FOB)
3. Language setting (toggles between English OR Mandarin).
4. Silent (MUTE) mode.
5. Vacation mode
6. Master code

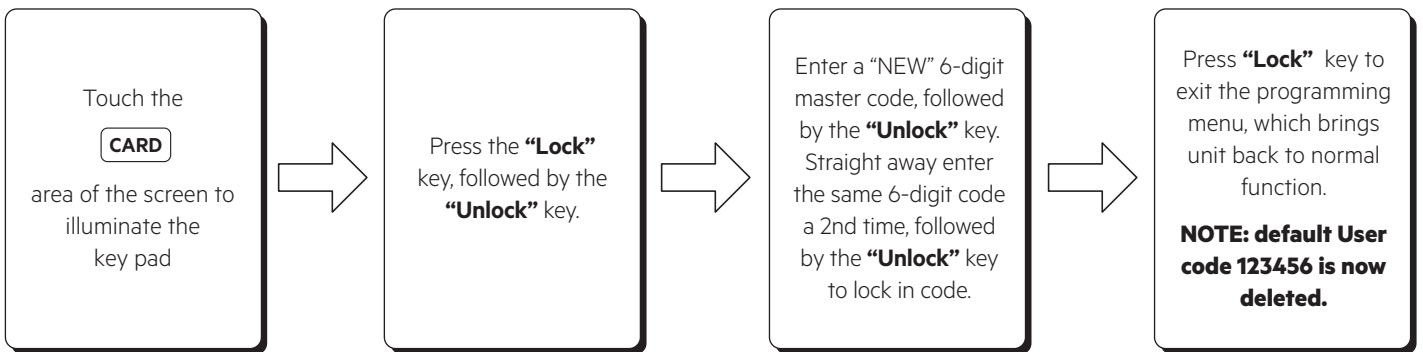
CODE SEQUENCE

All User codes entered are stored in a number sequence 001 to 050 so they can be deleted individually.

- 001 – 003 Master program codes (for programming).
- 004 – 050 User codes (for codes, remote, FOBs).

Note: Any programming changes or entries need to be completed within 12 seconds, for the changes to be accepted by the unit.

Step 1 - Set Program Master code

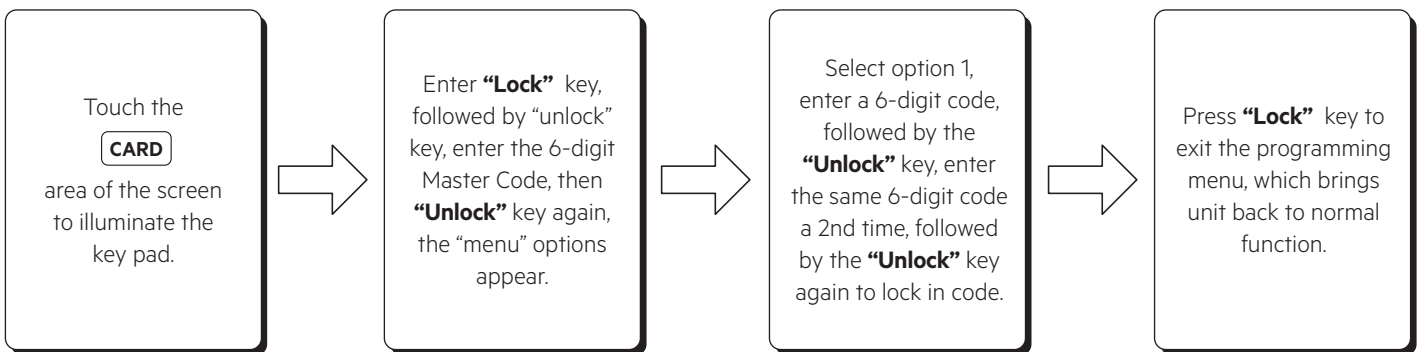


Note: You can now add another two master codes (see 6). Master codes can also be used to unlock the door.

| Code Sequence | Name | Mastercode | | | | | |
|---------------|------|------------|--|--|--|--|--|
| 001 | | | | | | | |
| 002 | | | | | | | |
| 003 | | | | | | | |

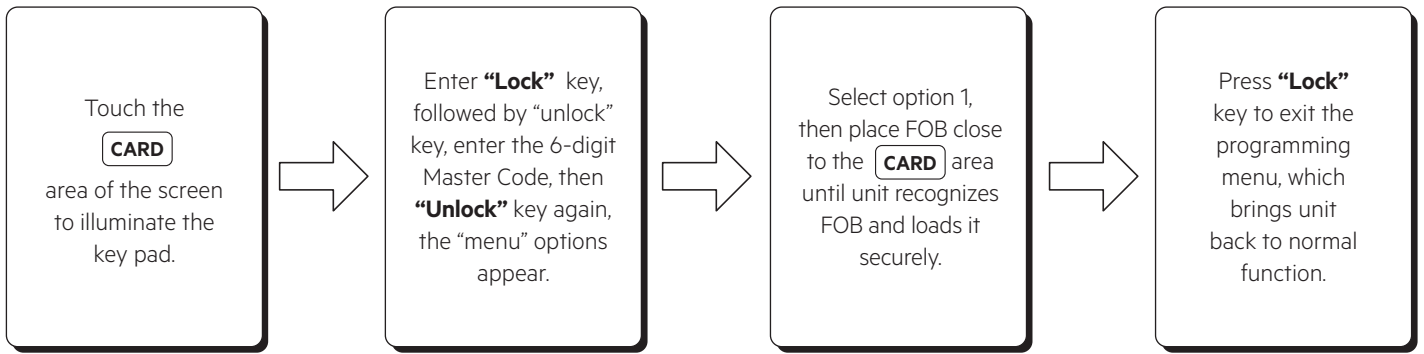
Programming Menu

1. ADD NEW USER CODE

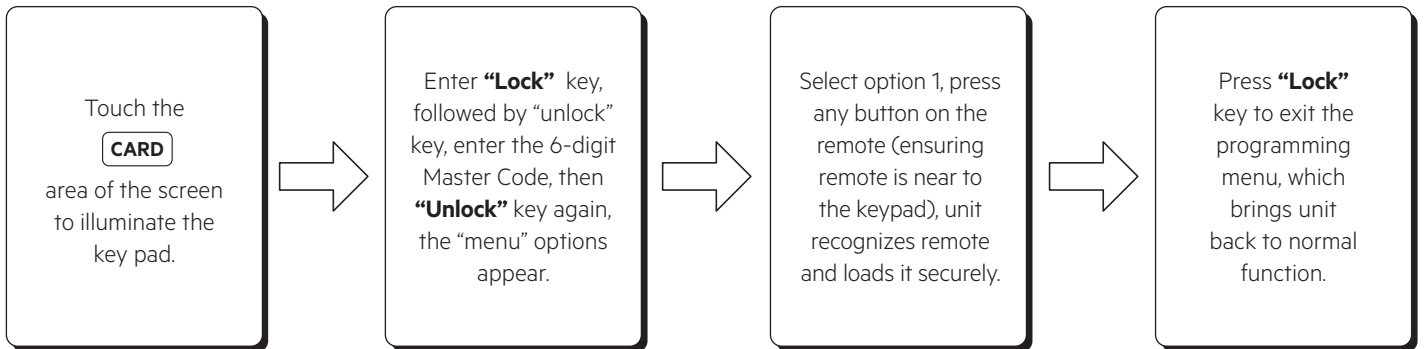


Note: Keep a record of the code sequence given to each user.

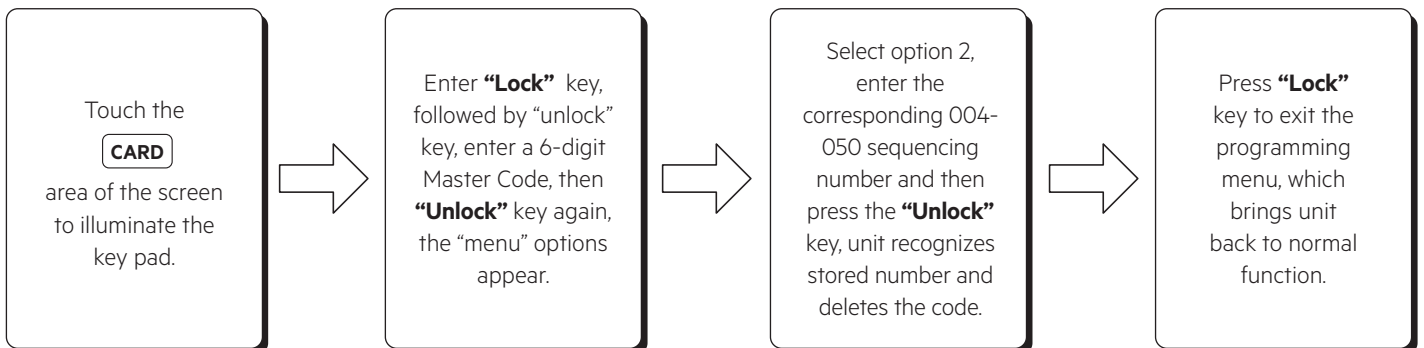
1.1 ADD NEW FOB



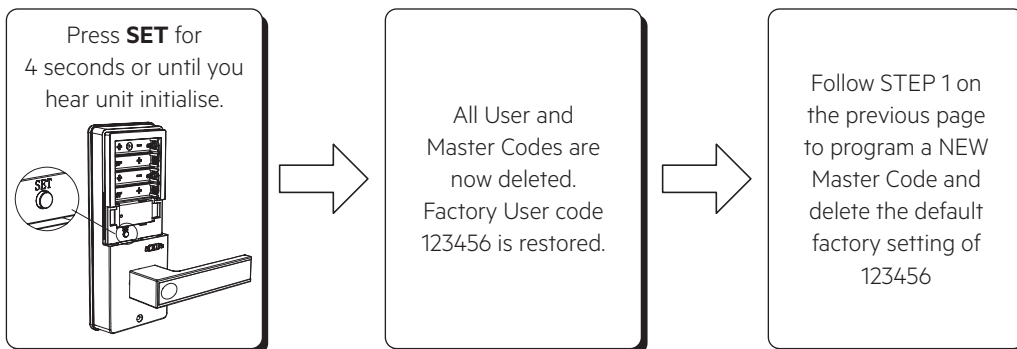
1.2 ADD NEW REMOTE



2. DELETE INDIVIDUAL MASTER CODES (001-003). USER CODES, REMOTES OR FOBS (USERS 004-050)

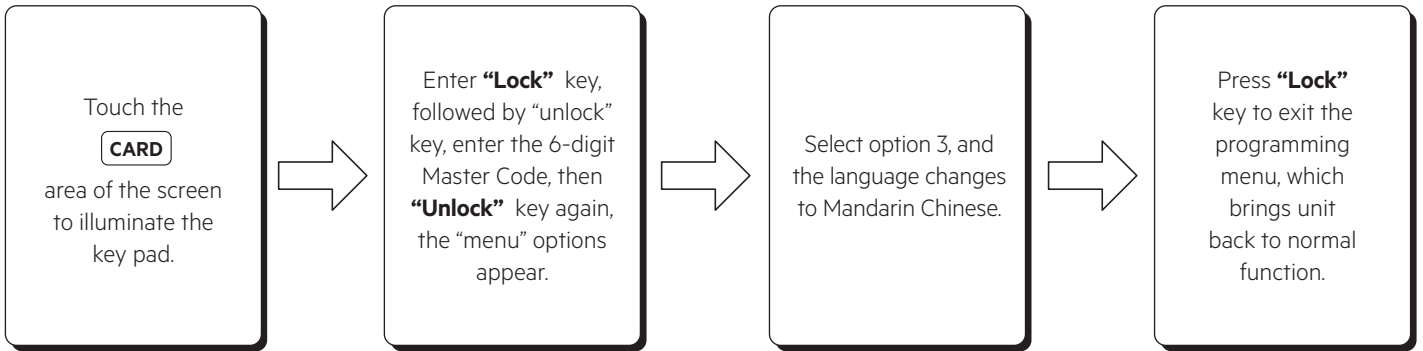


2.1. DELETE ALL MASTER CODES, USERS, REMOTES AND FOBS (Resets to factory default access code 123456)



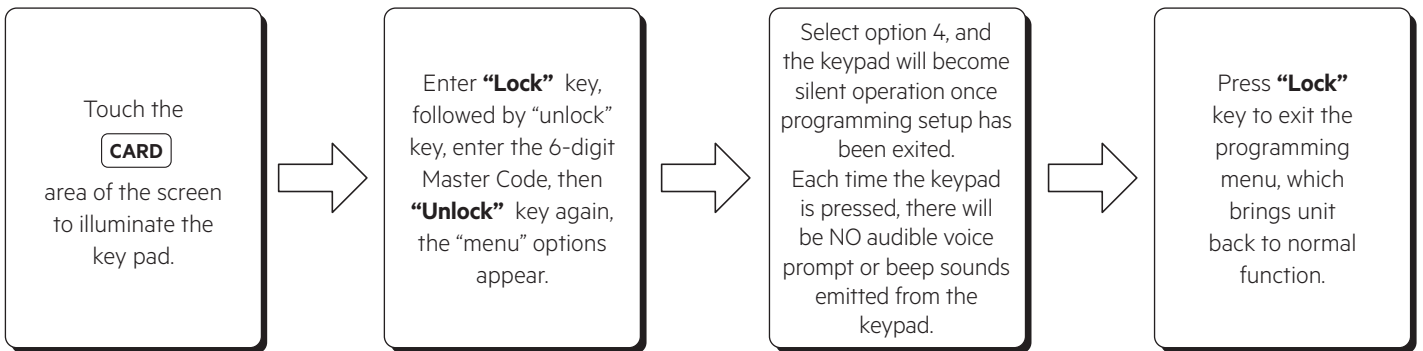
3. LANGUAGE SETTING

The default language setting is English, however the unit comes with a Mandarin Chinese language setting as well.



NOTE: To revert to English, repeat the above steps.

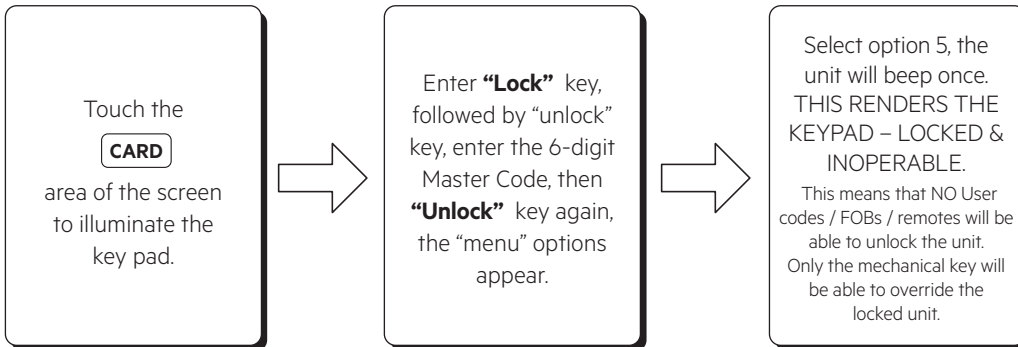
4. SILENT (MUTE) MODE



NOTE: To revert to sounded keypad, follow the above steps.

5. VACATION MODE

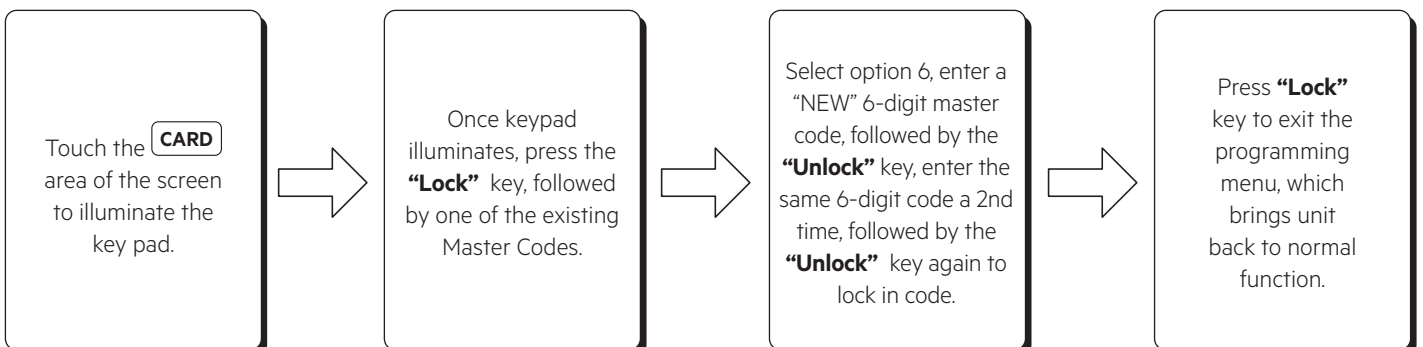
This feature offers increased security when the occupants have gone on vacation, and wouldn't want certain users to have access to the property.



NOTE: To return the lock back to normal function: Enter Master Code then press the "Unlock" key for "3 SECONDS" to return lock back to normal function. You will hear one beep which cancels the vacation mode.

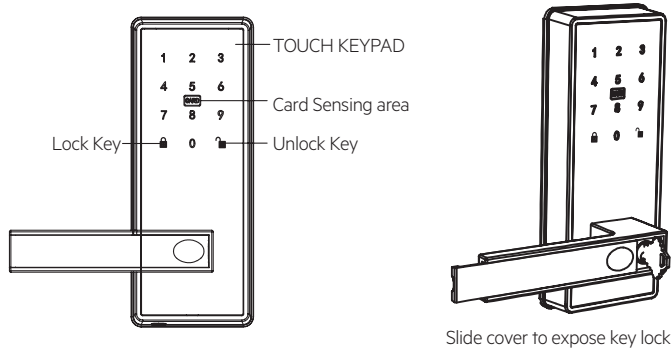
6. MASTER CODE

The system allows for upto three Master Codes



Specifications and functions

Exterior key pad



Important notes:

The unit comes pre-set with User code: 123456 (6-digit) access code. Once installed for the first time, it is recommended to change the default User code to a new 6-digit User code prior to continuing with other programming.

POWER SUPPLY:

4 x AA, 1.5V batteries (included).

LOW VOLTAGE BATTERY FUNCTION:

- When battery is under low voltage, the unit will beep once during each operation to indicate low voltage.
- The unit will continue to operate for approximately 100 times after the first beep sounds, alerting occupants to replace the batteries.
- Locking and / or unlocking of the unit will be affected if the batteries are not replaced in a timely manner.
- The mechanical key is still able to unlock / lock the unit should the batteries fail at any time.

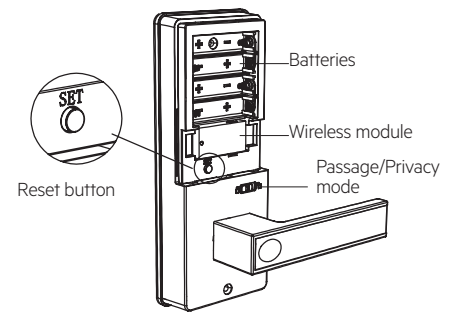
ENTRY CODE DISGUISE FUNCTION:

- This function is an added security feature to prevent passcode theft.
- With passcode disguise function, extra digits can be entered into the keypad, provided the correct 6-digit User code is entered amongst the extra digits. Regardless of how many digits are entered before or after the correct 6-digit User code, the unit will unlock.
- For example, if your User code is 123456, you can successfully unlock the unit by entering "xxxxx123456xxxx"
- If the wrong User code is entered 6 times or more, the keypad is locked, and the unit enters sleep (lockout) mode for 1 min. After 1 min has lapsed, to exit sleep mode, enter the correct User code.

PASSAGE / PRIVACY MODE SECURITY FEATURE

The passage / privacy button found on the inside unit above the lever handle, the toggle of this button allows the unit to seamlessly interchange from passage mode to privacy mode.

Interior Unit



🔓 Passage mode

the unit is always accessible from inside/outside.

🔒 Privacy mode

the unit is always locked from the outside, so no unwanted entry will occur (this does not affect the keypad or any stored programmed codes). After code is entered, unit automatically relocks.

MECHANICAL KEY (MASTER OVERRIDE)

- The mechanical key can be used any time to unlock the unit as an override, even when the batteries are flat.
- On external unit lever handle, slide back black strip to expose mechanical key cylinder.
- Holding lever handle, first turn key 90 degrees anti clockwise hold lever down, then a further 45 degrees anti clockwise (past resistance), while pulling lever handle down, pull door open to engage the key cylinder and manual override.

MAINTENANCE

- To avoid damaging the unit and armor glass touch screen, do not use any chemicals or lubricants when cleaning the unit.
- You can wash the screen and deadbolt in the shade with a damp cloth and soapy detergent, rinse of detergent and dry with a soft cloth.

WARRANTY

All electronic components used in Miles Nelson's range of products excluding batteries are guaranteed for a period of 3 years from the date of purchase. See milesnelson.co.nz for full warranty terms and conditions.

INSTALLATION INSTRUCTION VIDEOS



How to install the unit



Changing the handle direction
left hand / right hand