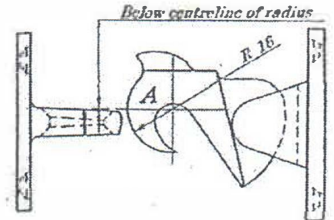
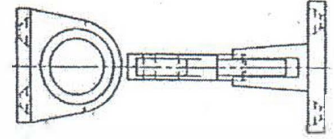
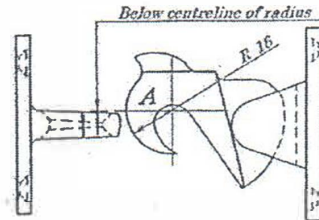
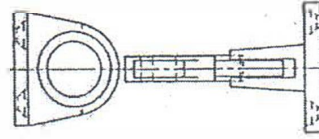
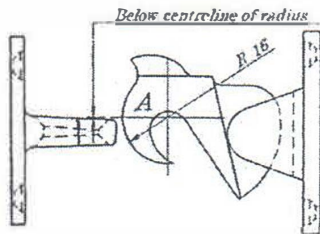
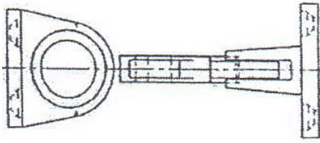


Heavy Duty Latching Door Stop 608SCW Installation Instructions



Installation Instructions Wall Mounted Door Holder

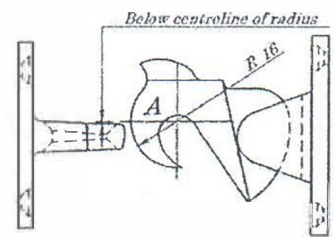
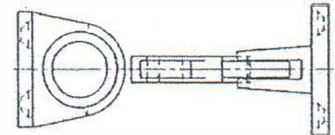
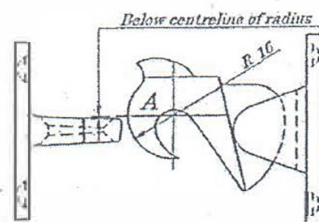
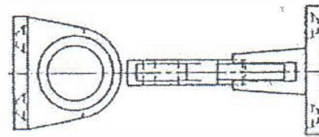
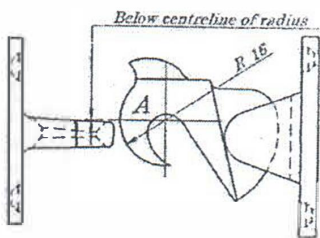
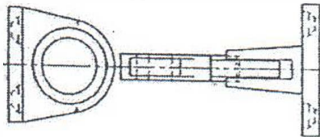
To assist the hook engage automatically it is important to install the hook and eye in such a position that the centre line of the hooks outer curve (marked A) is above the top edge of the retaining eye as shown in the above drawing.

Installation Instructions Wall Mounted Door Holder

To assist the hook engage automatically it is important to install the hook and eye in such a position that the centre line of the hooks outer curve (marked A) is above the top edge of the retaining eye as shown in the above drawing.

Installation Instructions Wall Mounted Door Holder

To assist the hook engage automatically it is important to install the hook and eye in such a position that the centre line of the hooks outer curve (marked A) is above the top edge of the retaining eye as shown in the above drawing.



Installation Instructions Wall Mounted Door Holder

To assist the hook engage automatically it is important to install the hook and eye in such a position that the centre line of the hooks outer curve (marked A) is above the top edge of the retaining eye as shown in the above drawing.

Installation Instructions Wall Mounted Door Holder

To assist the hook engage automatically it is important to install the hook and eye in such a position that the centre line of the hooks outer curve (marked A) is above the top edge of the retaining eye as shown in the above drawing.

Installation Instructions Wall Mounted Door Holder

To assist the hook engage automatically it is important to install the hook and eye in such a position that the centre line of the hooks outer curve (marked A) is above the top edge of the retaining eye as shown in the above drawing.